

MOTOTRBO™

DP2600e

DP2400e

Parts List



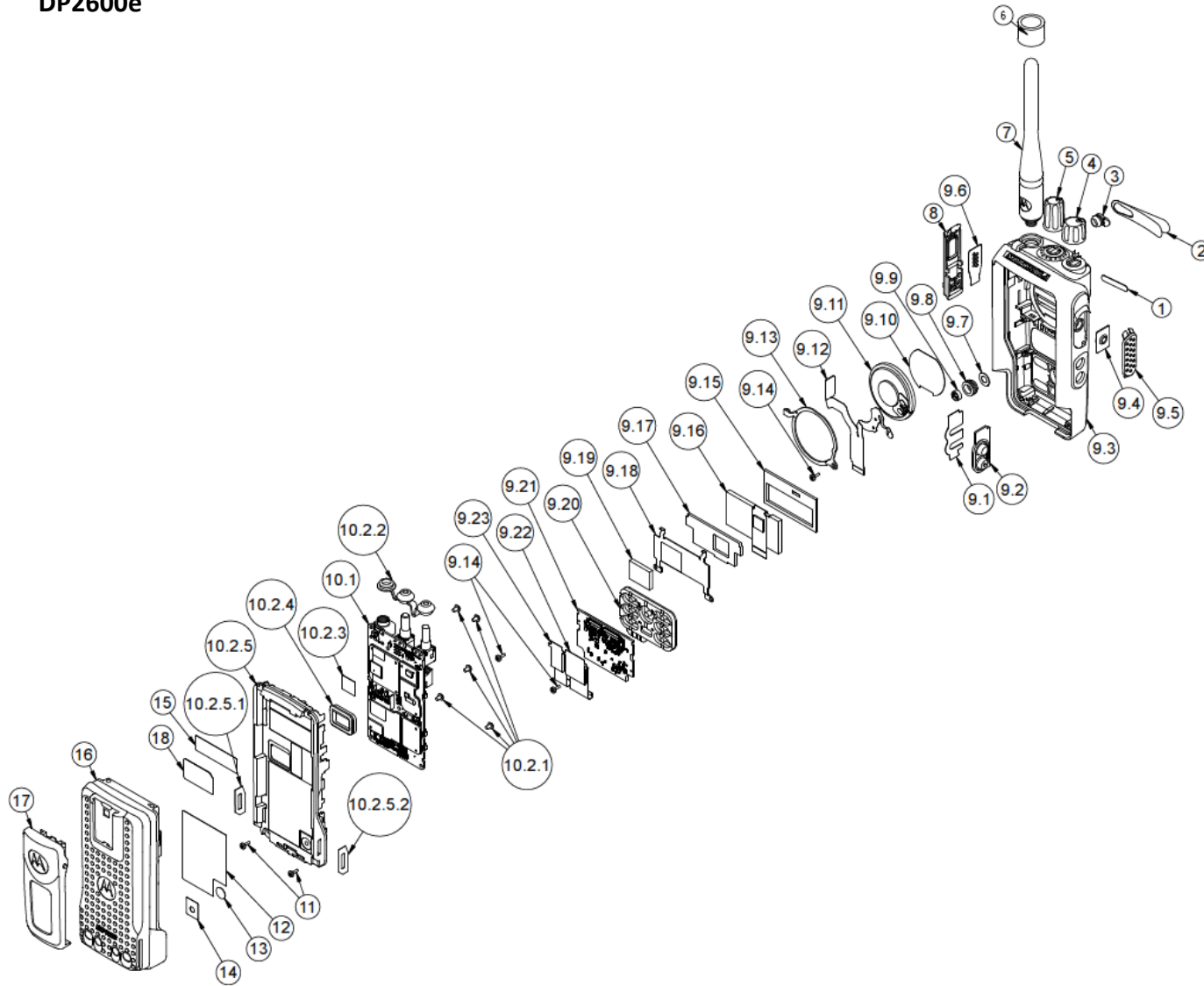
➔ DP2600e

➔ DP2400e

➔ Additional Part List



DP2600e



DP2600e

Item			Description	Part Number
1			Nameplate (Product Number)	See Additional Part List Table
2			Nameplate (Motorola)	33012026001
3			RF Plug	38012018001
4			Volume Knob	36012016001
5			Channel Knob	36012017001
6			Antenna ID Band	See Additional Part List Table
7			Antenna	See Additional Part List Table
8			Aesthetic Cover	0104058J40
9			Front Kit	PMLN7271_
	9.1		PTT Retainer	42012035001
	9.2		Side Button	KP000087A01
	9.3		Housing Assembly	0104067J09
	9.4		PTT Keypad	KP000086A01
	9.5		PTT Paddle	HN000696A01
	9.6		UC Escutcheon	33012020001
	9.7		Microphone Membrane	SL000209A01
	9.8		Microphone Boot	SL000208A01
	9.9		Microphone	50012012001
	9.10		Speaker Mesh	HW000738A01
	9.11		Speaker	AC000028A02
	9.12		UC-Audio Flex	PF001002A01
	9.13		Speaker Retainer	42012044001
	9.14		K18 Screw (Keypad-Display Retainer & Speaker Retainer)	0385273D06
	9.15		Front Display Poron	75012078001
	9.16		Display Module (2-Line Monochrome)	72012014002
	9.17		Back Display Poron	HW000757A01

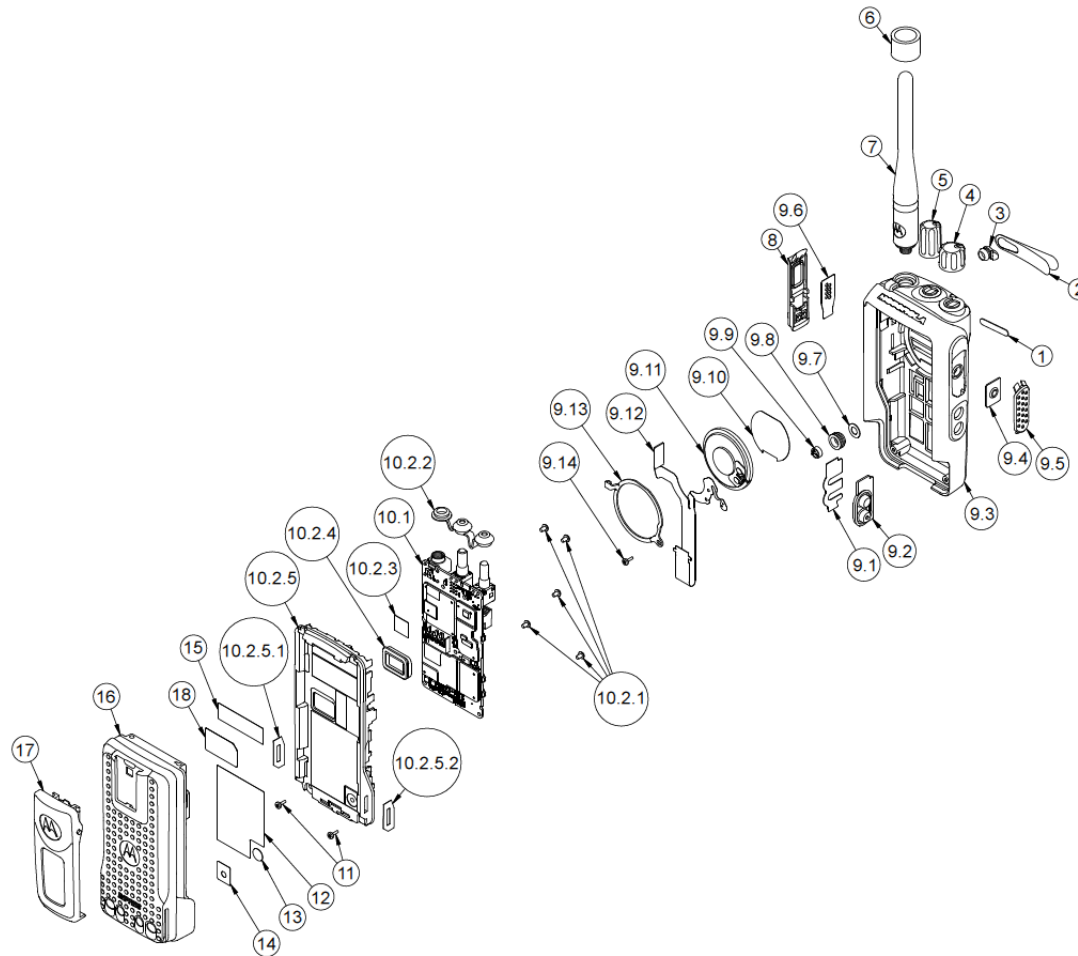


DP2600e

Item			Description	Part Number
	9.18		Display Retainer	42012034001
	9.19		Conductive Pad	75012147001
	9.20		Limited Keypad	75012080001
	9.21		Keypad Board Assembly	0104065J98
	9.22		Interface Keypad-Display Flex	PF001004A01
	9.23		Interface UC-Audio Flex	PF001005A01
10			Back Kit	See Additional Part List Table
	10.1		Main Board Assembly	Part of Back Kit
	10.2		Chassis Assembly	PMLN7273_
		10.2.1	M2 Screw (Main Board Assembly)	3012034001
		10.2.2	Top Control Seal	32012269001
		10.2.3	Thermal Pad	75012234001
		10.2.4	Battery Contact Seal	32012110001
		10.2.5	Chassis (With dispensed O-Ring)	0104067J11
			10.2.5.1 Chassis Left Label	LB000706A01
			10.2.5.2 Chassis Right Labe	LB000706A02
11			Front Kit-Back Kit Screw	0316281H01
12			Compro Label	LB000560A01
13			Ventilation Seal	3286058L01
14			Ventilation Label	LB000256A01
15			UL Label (Repaired)	LB000559A02 (For UL radio, need to replace with UL Label (Repaired) for all repaired radios)
16			Battery	See Additional Part List Table
17			Belt Clip	See Additional Part List Table
18			RTTE Label	5486749Z01



DP2400e



DP2400e

Item			Description	Part Number
1			Nameplate (Product Number)	See Additional Part List Table
2			Nameplate (Motorola)	33012026001
3			RF Plug	38012018001
4			Volume Knob	36012016001
5			Channel Knob	36012017001
6			Antenna ID Band	See Additional Part List Table
7			Antenna	See Additional Part List Table
8			Aesthetic Cover	0104058J40
9			Front Kit	PMLN7272_
	9.1		PTT Retainer	42012035001
	9.2		Side Button	KP000087A01
	9.3		Housing Assembly	0104067J10
	9.4		PTT Keypad	KP000086A01
	9.5		PTT Paddle	HN000696A01
	9.6		UC Escutcheon	33012020001
	9.7		Microphone Membrane	SL000209A01
	9.8		Microphone Boot	SL000208A01
	9.9		Microphone	50012012001
	9.10		Speaker Mesh	HW000738A01
	9.11		Speaker	AC000028A02
	9.12		UC-Audio Flex	PF001006A01
	9.13		Speaker Retainer	42012044001
	9.14		K18 Screw (Keypad-Display Retainer & Speaker Retainer)	0385273D06
10			Back Kit	See Additional Part List Table
	10.1		Main Board Assembly	Part of Back Kit
	10.2		Chassis Assembly	PMLN7273_



DP2400e

Item			Description	Part Number
		10.2.1	M2 Screw (Main Board Assembly)	3012034001
		10.2.2	Top Control Seal	32012269001
		10.2.3	Thermal Pad	7515526H01
		10.2.4	Battery Contact Seal	32012110001
		10.2.5	Chassis (With dispensed O-Ring)	0104067J11
		10.2.5.1	Chassis Left Label	LB000706A01
		10.2.5.2	Chassis Right Label	LB000706A02
11			Front Kit-Back Kit Screw	0316281H01
12			Compro Label	LB000560A01
13			Ventilation Seal	3286058L01
14			Ventilation Label	LB000256A01
15			UL Label (Repaired)	LB000559A02 (For UL radio, need to replace with UL Label (Repaired) for all repaired radios)
16			Battery	See Additional Part List Table
17			Belt Clip	See Additional Part List Table
18			RTTE Label	5486749Z01

NOTE *Items included in Front Kit (PMLN7272_)

** Items included in Chassis Assembly (PMLN7273_)

*** Back Kit (See Additional Part List Table) included Chassis Assembly (PMLN7273_)



Additional Part List

Item	Description	Part Number
Battery		
	Core NIMH 1300 mAh	PMNN4415_
	Core Slim Lilon 1500 mAh	PMNN4406_
	IMPRES Lilon 1500 mAh	PMNN4417_
	IMPRES Lilon Non-FM 2150 mAh	PMNN4418_
Nameplate		
	DP 2400e	33012039027
	DP 2600e	33012039028
Back Kit		
	Back Cover Kit, 136–174 MHz, 5W, Limited Keypad Portable	PMLD4733_S
	Back Cover Kit, 136–174 MHz, 5W, Limited Keypad Portable	PMLD4734_S
	Back Cover Kit, 136–174 MHz, 5W, Non Keypad Portable	PMLD4737_S
	Back Cover Kit, 403–527 MHz, 4W, Limited Keypad Portable	PMLE5074_S
	Back Cover Kit, 300–360 MHz, 4W, Non Keypad Portable	PLMLD4749_
	Back Cover Kit, 350–400 MHz, 4W, Limited Keypad Portable	PMLD4755_S
	Back Cover Kit, 350–400 MHz, 4W, Limited Keypad Portable	PMLD4800_S
	Back Cover Kit, 350–400 MHz, 4W, Non Keypad Portable	PMLD4799_S
	Back Cover Kit Non Keypad (300 MHz)	PMLD4646_S
Antenna ID Band		
	Antenna ID Band (Grey- Pack Of 10 PCS)	32012144001
	Antenna ID Band (Yellow- Pack Of 10 PCS)	32012144002
	Antenna ID Band (Green- Pack Of 10 PCS)	32012144003
	Antenna ID Band (Blue- Pack Of 10 PCS)	32012144004
	Antenna ID Band (Purple- Pack Of 10 PCS)	32012144005
Belt Clips		
	Belt Clip 2"	PMLN4651_
	Belt Clip 2.5"	PMLN7008_

